

XV2-23T Wi-Fi 6 Outdoor Access Point

802.11ax Dual-Radio, 2x2

XV2-23T Quick Look:

Value tier outdoor Wi-Fi 6 access point designed for cost-effective upgrade to the latest 802.11ax standard in Wi-Fi technology.

- Dual-radio Wi-Fi 6
- 5 GHz (2x2), 2.4 GHz (2x2)
- One 1 GbE uplink
- Outdoor rated IP67 enclosure
- cnMaestro™ Network Management

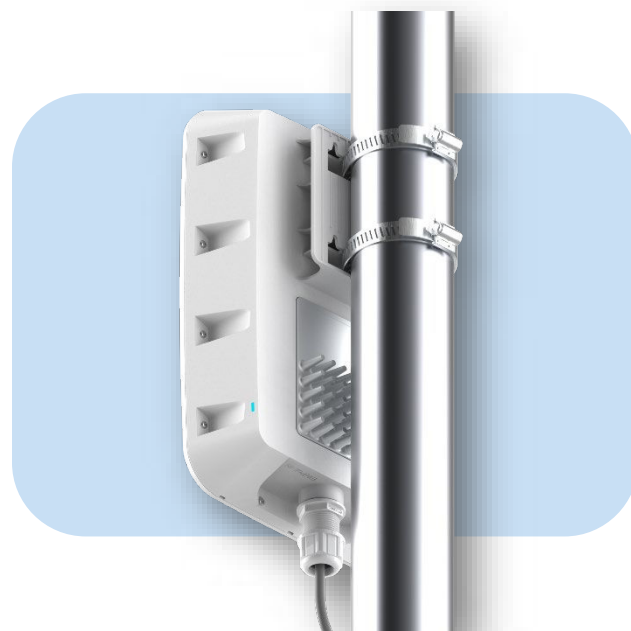


Value-Tier Wi-Fi for Any Market

The Cambium Networks' XV2-23T Wi-Fi 6 Outdoor Access Point (AP) delivers a high performance-to-price ratio attractive to any market. The XV2-23T can be onboarded and managed by your choice of Cambium management systems, including cnMaestro™ Essentials and cnMaestro X, available in cloud and on-premises versions. Choose the management type you need and change it at any time. Unlike other value-tier access points, the XV2-23T is never locked into just one management selection.

Designed for Fast Installation

The XV2-23T offers multiple installation methods included in the same shipping box. Mount the AP to a pole using the included clamps or to a flat surface using the integrated bracket. The XV2-23T is a compact size and high-performance outdoor Wi-Fi 6 AP.



XV2-23T Wi-Fi 6 Outdoor Access Point

Access Point Specifications

Radios	5 GHz 802.11 a/n/ac/ax, 2x2 2.4 GHz 802.11 b/g/n/ax, 2x2	Power	Typical 20W, 802.3at powered device
Wi-Fi	802.11 a/b/g/n/ac/ax	Dimensions	300 mm x 200 mm x 84 mm (11.8 in x 7.9 in x 3.3 in)
SSID Security	WPA3-SAE, WPA3-Enterprise, WPA2-PSK (CCMP, AES, 802.11i), WPA2-Enterprise (802.1X/EAP), OSEN, OWE, Open	Weight	1,200 g (2.65 lbs)
Ports	1 x IEEE 10/100/1000 Mbps Ethernet	Security	Kensington lock slot
Antenna Gain	5 GHz 10 dBi, Omni 2.4 GHz 7 dBi, Omni	Mount Options	Pole or wall mounting. Pole diameter: min 30 mm / max 75 mm
Max EIRP*	5 GHz 36 dBm 2.4 GHz 34 dBm	Ambient Operation Temperature	-40°C to 65°C (-40°F to 149°F)
Max PHY Rate	5 GHz radio 2,402 Mbps 2.4 GHz radio 573.5 Mbps	Storage Temperature	-40°C to 70°C (-40°F to 158°F)
Filter LTE Band	38, 40	Humidity	95% RH non-condensing
FCC	Ch 1–11, 36–48, 52–64, 100–144, 149–165	MTBF	5,077,102 hours @ 25°C 1,224,983 hours @ 65°C
ISED	Ch 1–11, 36–48, 52–64, 100–116, 149–165	LEDs	Multi-color status LEDs, dimmable, on/off
ETSI*	Ch 1–13, 36–64, 52–64, 100–140, 149–173	Certifications	WiFi Alliance 802.11a/b/g/n/ac/ax, PP2.0
ROW*	Ch 1–14, 36–48, 52–64, 100–144, 149–177	(compliance)	FCC, CE, IC, IEC60950, IEC62368, EN50121, EN61373

*Individual country limits may apply.

Standards

Wi-Fi Protocols	VHT MCS rates, 16/64/256/1024-QAM, Channel width support in 5GHz: 20/40/80/160 MHz
	Transmit Beam steering, AMSDU, AMPDU, RIFS, STBC, LDPC, MIMO Power Save, MRC, BPSK, QPSK, CCK, DSSS, OFDM, OFDMA, UL/DL MU-MIMO
	IEEE 802.11a/ac/ax/b/d/e/g/h/i/k/n/r/u/v/w

XV2-23T Wi-Fi 6 Outdoor Access Point

Network Specifications

Operational Modes	Controllerless standalone Cloud-managed cnMaestro or VM	RF Management	Multi-modal RF optimization supporting Auto-RF for dynamic channel selection and dynamic power adjustment configured via cnMaestro, performed in the intelligent edge AP. RF monitor with channel utilization/ packet error rate / interference.
WLAN	256 concurrent clients 16 SSIDs per AP	Band Steering	Yes
Security, Authentication Encryption	Open, WPA2-AES with PSK, ePSK and Enterprise WPA3 with PSK (WPA3-SAE), ePSK, Enterprise, Enterprise-CNSA, OWE (Enhanced Open) OSN and PMF (802.11 W) MAC authentication with local database or external database using RADIUS protocol 802.1X with EAP-TTLS, EAP-TLS / MSCHAPv2, PEAPv0 / PEAPv1 / EAP-PEAP / EAP-SIM/AKA/AKA'/FAST Hotspot 2.0 WEB authentication	Mesh	Multi-hop, either band
Wi-Fi Quality of Service	WMM (packet marking either with 802.1p or IP DSCP), WMM-PS, U-APSD Multicast to unicast conversion	Scheduled WLAN	On/off by day, week, time of day
Service Availability	Critical network resource monitor with SSID shutdown	Data Limit	Client bitrate/time/throughput limit per SSID
Fast Roaming	802.11k/r/v, OKC, cnMaestro-assisted roam	Network	TCP connection log, NAT logging firewall, DHCP server, DHCP Relay option 82, VLAN pooling, RADIUS attribute, VID VLAN per SSID per user, ePSK with VLAN assignment per PSK LLDP, IGMP v1, v2
Guest Access/ Captive Portal Service (EasyPass)*	cnMaestro-hosted EasyPass portal Multiple authentication methods supported to onboard guest user: <ul style="list-style-type: none"> Radius-based authentication Click-through with simple terms and conditions acceptance Social login using Google®, Facebook® SMS-based authentication (X) Voucher-based access Microsoft® Azure AD and Google Workspace® (X) Sponsored guest access (X) Self-registration access (X) cnMaestro API support for external captive portal integration 802.11u, Hotspot 2.0	Network Tools	Wired and wireless remote packet capture, logging, WAN speed test, ZapD, remote network connectivity tools
Accounting	RADIUS accounting, load balancing AAA servers, Dynamic Authorization COA, DM	Tunnel	L2TPv2, L2GRE, PPPoE
API	RESTful management and statistics API via cnMaestro X, presence location push APIs	IP	IPv4, IPv6
		VLAN	802.11Q, max 4096
		Management Interfaces	HTTP / HTTPS web interface, SSH, Telnet
		Security	Rogue AP detection and termination(X), WIDs/WIPs, DoS protection L2–L7 firewall with application visibility(X) & control(X), DNS based access control(X). ACL and AirCleaner tools
		Services	Wi-Fi Calling control, NTP, Syslog, DNS proxy, SNMP traps, SNMPv1, SNMPv2c, SNMPv3, TCP and DNS logging

*X features available in cnMaestro X.

XV2-23T Wi-Fi 6 Outdoor Access Point

Management



cnMaestro uses a distributed intelligence architecture with cloud-first management and edge-intelligent APs that self-optimize for the RF environment. cnMaestro delivers a single pane-of-glass management for Cambium broadband fixed wireless, cnMatrix Ethernet Switches, enterprise-grade Wi-Fi APs, NSE Service Edge, and residential service provider routers.

cnMaestro can be deployed on cloud or on-premises via a virtual machine.

To serve a growing market for advanced management and services functionality, Cambium Networks offers cnMaestro in two management tiers:

cnMaestro X

Paid subscription that includes:

- Advanced device management capabilities
- Deep packet inspection (DPI) application visibility and Control for 2,400+ apps
- RESTful management and statistics API
- Presence location push APIs
- Graphic reports
- Webhooks
- Cambium Care Pro for 24x7 technical support
- Accelerated access to L2 engineers and regular software updates

Assists

- Assesses the network's configuration and identifies weak security settings and proposes a fix to ensure the network configuration is up to the top security industry standards

X Assurance

- Helps to quickly identify network-wide connectivity issues by isolating every element of the client's lifecycle, either radio or network related
- Gives an overview quality index of the network and highlights each element's contribution to easily identify the worst offender
- Provides insight of probable causes and proposes fixes for the administrator to apply
- Provides individual client connectivity visibility throughout the entire lifecycle of its connection to easily identify each connection's result and highlight the failure reason, should there be any

EasyPass Portal with Additional Options

- Self-registration: Form-based access
- Sponsored guest: Guest ambassador-based access
- Paid access: Monetize the Wi-Fi access
- Microsoft Azure: Corporate user login
- Google Login: Web login using Google accounts

cnMaestro Essentials

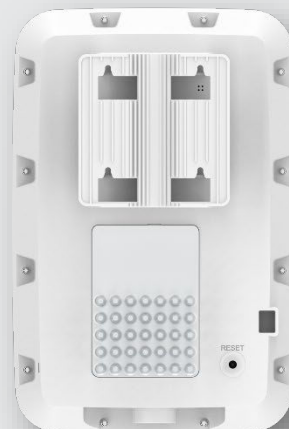
License-free cloud management that delivers a disruptive total cost of ownership (TCO) for organizations of all sizes. Includes EasyPass for OneClick or voucher-based connection as well as WiFi4EU access.

**Find out more about
cnMaestro**

XV2-23T Wi-Fi 6 Outdoor Access Point



Front



Back



Bottom



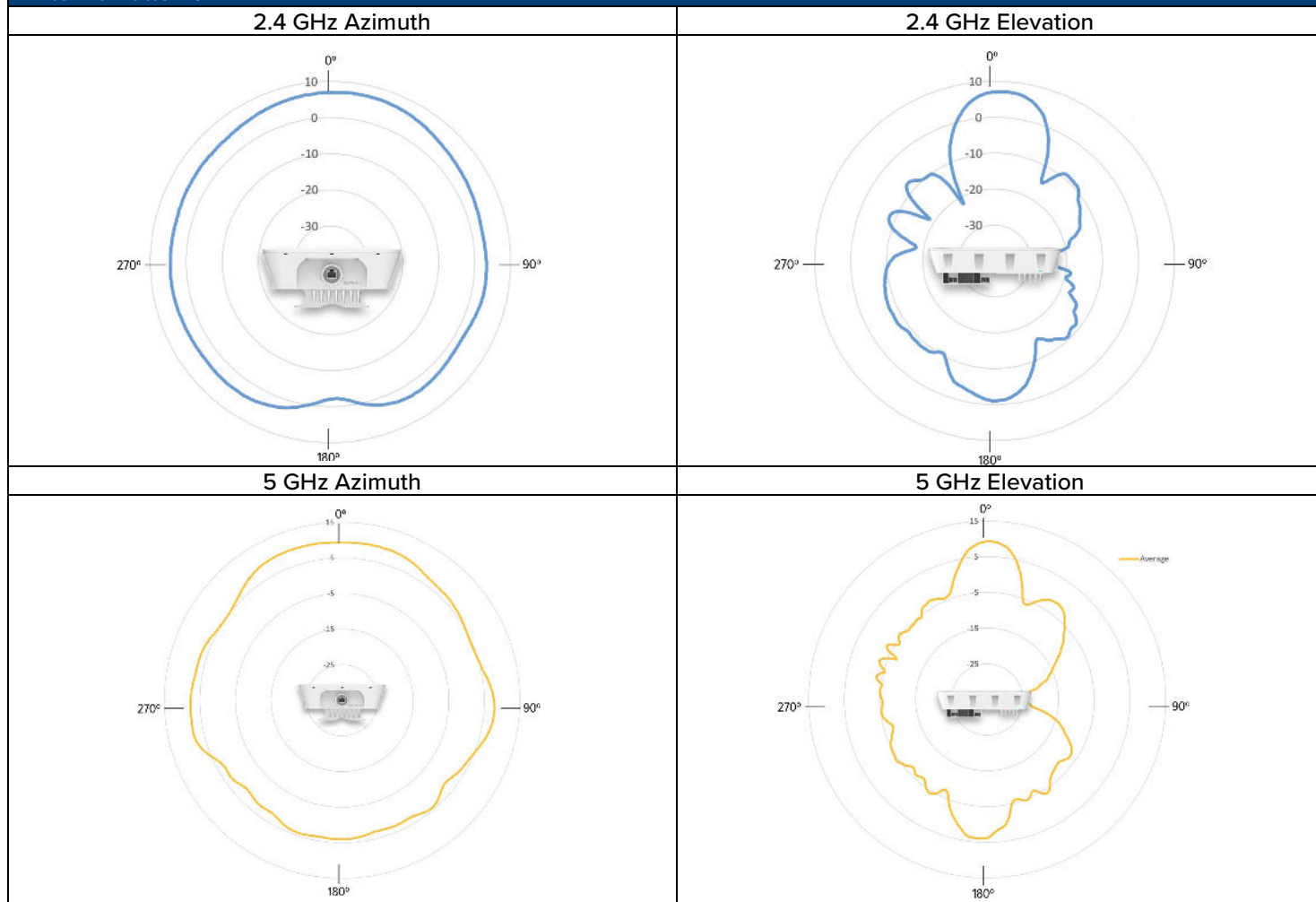
Side



Front Oblique

XV2-23T Wi-Fi 6 Outdoor Access Point

Antenna Patterns



2.4 GHz Receive Sensitivity (dBm) per Chain

802.11b		802.11g	
1 Mb	-99	1 Mb	-94.5
11 Mb	-91	11 Mb	-75.75
HT20		HT40	
MCS0	-95	MCS0	-92.5
MCS7	-76.5	MCS7	-73.5
HE20		HE40	
MCS0	-94.75	MCS0	-92
MCS11	-64.25	MCS11	-61.25

2.4 GHz TX Power Target

Rate	Pout (dBm)
802.11b 1Mb	27
802.11g 6Mb	27
MCS0 HT20, HT40	27, 27
MCS7 HT20, HT40	25, 25
MCS0 VHT20, VHT40	27, 27
MCS11 VHT20, VHT40	23, 23
MCS0 HE20, HE40	27, 27
MCS11 HE20, HE40	23, 23

5 GHz Receive Sensitivity (dBm) per Chain

VHT20	VHT40	VHT80	VHT160
MCS0 -95.5	MCS0 -94	MCS0 -90	MCS0 -87.5
MCS7 -77	MCS7 -74	MCS7 -71.5	MCS7 -69
HE20	HE40	HE80	HE160
MCS0 -95.5	MCS0 -93.5	MCS0 -90.5	MCS8 -65
MCS7 -76.5	MCS7 -74	MCS7 -71.5	MCS11 -57

5 GHz TX Power Target

Rate	Pout (dBm)
802.11a	27
MCS0 HT20, HT40	27, 27
MCS0 HT20, HT40	24, 24
MCS0 VHT40, VHT80, VHT160	27, 27, 27, 27
MCS11 VHT40, VHT80, VHT160	22, 22, 22, 21
MCS0 HE20, HE40, HE80, HE160	27, 27, 27, 27
MCS11, HE20, HE40, HE80, HE160	22, 22, 22, 21

XV2-23T Wi-Fi 6 Outdoor Access Point

XV2-23T Ordering Information

Regulatory Model	XV2-23T
XV2-23T0B00-US	XV2-23T Outdoor Dual radio WiFi 6 AP, 2x2, 2.5 GbE, IP67, US
XV2-23T0B00-EU	XV2-23T Outdoor Dual radio WiFi 6 AP, 2x2, 2.5 GbE, IP67, EU
XV2-23T0B00-RW	XV2-23T Outdoor Dual radio WiFi 6 AP, 2x2, 2.5 GbE, IP67, RW
XV2-23T0B00-CA	XV2-23T Outdoor Dual radio WiFi 6 AP, 2x2, 2.5 GbE, IP67, CA
C000000L141A	PoE, 60W, 56V, 10GbE DC Injector, Indoor, Energy Level 6 Supply, accepts C5 connector
N000000L034B	PoE injector, 30.5W, 56V, 5GbE DC Injector, Indoor, Energy Level 6 Supply, accepts C5 connector
N000900L017A	PoE, 15.4W, 56V, GbE DC Injector, Indoor, Energy Level 6 Supply, accepts C5 connector
AX-E510RBKT-WW	Shock mount bracket, Metal bracket suited for wall and ceiling mount.
AX-O-WL1BKT-WW	Wall or Ceiling mounting bracket for Outdoor Wi-Fi access point. Adds security and allows mounting on junction boxes. Plastic bracket.

cnMaestro X Subscriptions

MSX-SUB-XV2-23T-1	cnMaestro X for one XV2-23T AP. Creates one Device Tier 3 slot. Includes Cambium Care Pro support. 1-year subscription
MSX-SUB-XV2-23T-3	cnMaestro X for one XV2-23T AP. Creates one Device Tier 3 slot. Includes Cambium Care Pro support. 3-year subscription
MSX-SUB-XV2-23T-5	cnMaestro X for one XV2-23T AP. Creates one Device Tier 3 slot. Includes Cambium Care Pro support. 5-year subscription

Cambium Care Support

CCADV-SUP-XV2-23T-1	Cambium Care Advanced, 1-year support for one XV2-23T Wi-Fi 6/6E AP. 24x7 TAC support, SW updates, and NBD advance replacement for HW
CCADV-SUP-XV2-23T-3	Cambium Care Advanced, 3-year support for one XV2-23T Wi-Fi 6/6E AP. 24x7 TAC support, SW updates, and NBD advance replacement for HW
CCADV-SUP-XV2-23T-5	Cambium Care Advanced, 5-year support for one XV2-23T Wi-Fi 6/6E AP. 24x7 TAC support, SW updates, and NBD advance replacement for HW
CCPRO-SUP-XV2-23T-1	Cambium Care Pro, 1-year support for one XV2-23T Wi-Fi 6/6E AP. 24x7 TAC support and SW updates
CCPRO-SUP-XV2-23T-3	Cambium Care Pro, 3-year support for one XV2-23T Wi-Fi 6/6E AP. 24x7 TAC support and SW updates
CCPRO-SUP-XV2-23T-5	Cambium Care Pro, 5-year support for one XV2-23T Wi-Fi 6/6E AP. 24x7 TAC support and SW updates
CCADV-UPG-XV2-23T-1	Cambium Care Advanced Add-on to cnMaestro X, 1-year support for one XV2-23T. 24x7 TAC support, SW updates, and NBDS advance replacement for HW
CCADV-UPG-XV2-23T-3	Cambium Care Advanced Add-on to cnMaestro X, 3-year support for one XV2-23T. 24x7 TAC support, SW updates, and NBDS advance replacement for HW
CCADV-UPG-XV2-23T-5	Cambium Care Advanced Add-on to cnMaestro X, 5-year support for one XV2-23T. 24x7 TAC support, SW updates, and NBDS advance replacement for HW

LIMITED WARRANTY

Cambium Networks XV2-23T Wi-Fi 6 Access Point includes a limited lifetime hardware warranty for a period of 3 years.

ABOUT CAMBIUM NETWORKS

Cambium Networks enables service providers, enterprises, industrial organizations, and governments to deliver exceptional digital experiences and device connectivity with compelling economics. Our ONE Network platform simplifies management of Cambium Networks' wired and wireless broadband and network edge technologies. Our customers can focus more resources on managing their business rather than the network. We make connectivity that just works.

cambiumnetworks.com

08042025