

# XE3-4 Wi-Fi 6/6E Indoor Access Point

802.11ax Tri-Radio 2x2/2x2/4x4 (2+2+4) Access Point with Software-Defined Radio

## XE3-4 Quick Look:

- Tri-radio/tri-band Wi-Fi 6 and 6E
- 6.6 Gbps aggregate data rate
- Software-defined 5 GHz/6 GHz radio
- 2.5 GbE and 1 GbE uplink ports
- EasyPass with Microsoft Azure and Google G Suite integration



## Designed for High-Density and Edge Services

The XE3-4 is a tri-radio Wi-Fi 6/6E, 2x2/2x2/4x4 (2+2+4) access point (AP) designed to deliver future-proof performance and value for building next-generation networks. Wi-Fi 6 delivers faster and more efficient wireless network connections than previous generation Wi-Fi technologies. Wi-Fi 6E extends the capacity of Wi-Fi into the 6 GHz band, more than tripling the wireless spectrum available. With a high-speed software-defined radio, the XE3-4 enables seamless transition to Wi-Fi 6E with the ability to easily change from dual-band to tri-band mode (2.4 GHz, 5 GHz, and 6 GHz) when sufficient 6 GHz clients are available.

The XE3-4 is fully backward compatible with existing Wi-Fi technology, enabling simultaneous support of new high-speed clients, legacy clients, low-bitrate IoT devices, and more in a single wireless infrastructure.

The XE3-4 comes with limited lifetime warranty providing return and repair service on the access point from date of purchase until end of life of the product.

## Cloud and On-Premises Management

The XE3-4 is supported by Cambium ONE Network enterprise architecture managed by the cnMaestro™ Network Management System. cnMaestro uses a distributed intelligence architecture with cloud-first management and edge-intelligent Wi-Fi that self-optimizes for the RF environment. cnMaestro delivers a single-pane-of-glass management experience for enterprise Wi-Fi APs, cnMatrix™ Ethernet Switches, NSE Security Appliance/SD-WAN/Firewall, service provider residential routers, and Cambium's fixed wireless broadband and fiber.

## cnMaestro Network Management

- Wi-Fi, switching, security, and fixed wireless broadband
- Help desk troubleshooting tools
- Real-time and historical device analytics
- EasyPass user and device onboarding portals
- Application visibility and control
- Graphical reports
- And more

## XE3-4 Wi-Fi 6/6E Indoor Access Point

### Access Point Specifications

|                       |   |                                      |  |
|-----------------------|---|--------------------------------------|--|
| <b>Radios</b>         | <b>5 GHz/6 GHz:</b> 802.11a/n/ac/ax, 4x4:4 SW definable<br><b>5 GHz:</b> 802.11 a/n/ac/ax, 2x2:2<br><b>2.4 GHz:</b> 802.11 b/g/n/ax, 2x2:2<br>BLE 4.1 | <b>Power</b>                         | 32W 802.3bt powered device<br>25.5W 802.3at with USB, BT disabled<br>Typical 22W (USB disabled)  |
| <b>Wi-Fi</b>          | 802.11 a/b/g/n/ac/ax  | <b>Dimensions</b>                    | 215 mm x 215 mm x 42 mm (without bracket)<br>(8.46 in x 8.46 in x 1.65 in )  |
| <b>SSID Security</b>  | WPA3-SAE, WPA3-Enterprise, WPA2-PSK (CCMP, AES, 802.11i), WPA2-Enterprise (802.1X/EAP), OSEN, OWE, Open   | <b>Weight</b>                        | 900 g (1.98 lb)  |
| <b>Ports</b>          | 1 x IEEE 10/100/1000/2500 Mbps Ethernet<br>1 x IEEE 10/100/1000 Mbps Ethernet<br>1 x USB 2.0  | <b>Security</b>                      | Kensington lock slot   |
| <b>Antenna Gain</b>   | <b>6 GHz:</b> 6.29 dBi, Omni<br><b>5 GHz:</b> 6.12 dBi, Omni<br><b>2.4 GHz:</b> 4.85 dBi, Omni  | <b>Mount Options</b>                 | Wall or ceiling, T-bar with included locking bracket, ceiling tile plate   |
| <b>Max EIRP*</b>      | <b>6 GHz:</b> 30 dBm<br><b>5 GHz:</b> 31 dBm<br><b>2.4 GHz:</b> 29 dBm  | <b>Ambient Operation Temperature</b> | 0°C to 50°C (32°F to 122°F)  |
| <b>FCC</b>            | Ch 1–11, 36–64, 100–144, 149–165  | <b>Storage Temperature</b>           | -40°C to 70°C (-40°F to 158°F)   |
| <b>ISED</b>           | Ch 1–11, 36–64, 100–116, 149–165  | <b>Humidity</b>                      | 95% RH non-condensing  |
| <b>ETSI*</b>          | Ch 1–13, 36–64, 100–140, 149–173  | <b>MTBF</b>                          | 668,759 hours at 25°C<br>314,145 hours at 50°C   |
| <b>ROW*</b>           | Ch 1–14, 36–64, 100–144, 149–173  | <b>LEDs</b>                          | Multi-color status LEDs, dimmable, on/off  |
| <b>6 GHz Channels</b> |   | <b>Certifications (Compliance)</b>   | Wi-Fi Alliance, Passpoint 3.0<br>FCC, IC, CE, EN 60601-1-2, EN 60950-1<br>IEC 62368-1 Safety, EN 60601-1-2 Medical EMC, EN 61000-4-2/3/5 Immunity, EN 50121-1 Railway EMC, EN 50121-4 Railway EMC, IEC 61373 Railway Shock & Vibration, UL 2043 Plenum<br>EN 62311 Human Safety/RF Exposure, WEEE & RoHS |
| <b>FCC/IC/ROW</b>     | Ch 1–233  |                                      |  |
| <b>EU</b>             | Ch 1–93   |                                      |  |

\*Individual country limits may apply.

### Max PHY Data Rate

| Radio Type     | Band       | Number of Radios | Max Data Rate     |
|----------------|------------|------------------|-------------------|
| 4x4 SW-Defined | 5 or 6 GHz | 1                | 4.804 Gbps        |
| 2x2            | 5 GHz      | 1                | 1.201 Gbps        |
| 2x2            | 2.4 GHz    | 1                | 574 Mbps          |
| <b>Total</b>   |            | <b>3</b>         | <b>6.579 Gbps</b> |

### Standards

#### Wi-Fi Protocols

Data Coding support 16/64/256/1024/4096-QAM, VHT MCS rates

Channel width support 5GHz and 6GHz band: 20/40/80/160 MHz

TWT, Long OFDM Symbol, transmit beamforming, Airtime Fairness, AMSDU, AMPDU, RIFS, STBC, LDPC, MIMO Power Save, MRC, BPSK, QPSK, CCK, DSSS, OFDM, OFDMA, UL/DL MU-MIMO

IEEE 802.11 a/ac/ax/b/d/e/g/h/i/j/k/n/r/s/u/v/w

## XE3-4 Wi-Fi 6/6E Indoor Access Point

| Network Specifications                                  |   |
|---|---|
| <b>Operational Modes</b>                                | Controllerless standalone<br>Cloud-managed cnMaestro or VM  |
| <b>WLAN</b>   | 500 clients per radio 1,500 per AP<br>16 SSIDs per AP   |
| <b>Security, Authentication Encryption</b>              | Open, WPA-TKIP, WPA2-AES with PSK, ePSK and Enterprise<br>WPA3 with PSK (WPA3-SAE), ePSK, Enterprise, Enterprise-CNSA, OWE (Enhanced Open)<br>OSEN and PMF (802.11 W)<br>MAC authentication with local database or external database using RADIUS protocol<br>802.1X with EAP-TTLS, EAP-TLS / MSCHAPv2, PEAPv0 / PEAPv1 / EAP-PEAP / EAP-SIM/AKA/AKA'/FAST<br>MAC auth fallback to guest portal<br>Hotspot WEB authentication   |
| <b>Wi-Fi Quality of Service</b>                         | WMM (packet marking either with 802.1p or IP DSCP), WMM-PS, U-APSD<br>Multicast to unicast conversion   |
| <b>Service Availability</b>                             | Critical network resource monitor with SSID shutdown  |
| <b>Fast Roaming</b>                                     | 802.11k/r/v, OKC, cnMaestro-assisted roam   |
| <b>Guest Access/ Captive Portal Service (EasyPass)*</b> | cnMaestro-hosted EasyPass portal<br>Multiple authentication methods supported to onboard guest user: <ul style="list-style-type: none"> <li>• Radius-based authentication</li> <li>• Click-through with simple terms and conditions acceptance</li> <li>• Social login using Google®, Facebook®</li> <li>• SMS-based authentication (X)</li> <li>• Voucher-based access</li> <li>• Microsoft® Azure AD and Google Workspace® (X)</li> <li>• Sponsored guest access (X)</li> <li>• Self-registration access (X)</li> </ul> cnMaestro API support for external captive portal integration<br>802.11u, Hotspot 2.0 |
| <b>Accounting</b>                                       | RADIUS accounting, load balancing AAA servers, Dynamic Authorization COA, DM  |
| <b>API</b>  | RESTful management and statistics API via cnMaestro X, presence location push APIs  |
| <b>RF Management</b>                                    | Multi-modal RF optimization supporting Auto-RF for dynamic channel selection & dynamic power adjustment configured via cnMaestro, performed in the intelligent edge AP<br><br>RF monitor with channel utilization/packet error rate/interference.   |
| <b>Band Steering</b>                                    | Yes   |
| <b>Mesh</b>   | Multi-hop, all 3 bands  |
| <b>Scheduled WLAN</b>                                   | On/off by day, week, time of day  |
| <b>Data Limit</b>                                       | Client bitrate/time/throughput limit per SSID   |
| <b>Network</b>  | LACP (802.3ad), TCP connection log, NAT logging firewall, DHCP server, DHCP Relay option 82, VLAN pooling, RADIUS attribute, VID VLAN per SSID per user, ePSK with VLAN assignment per PSK<br>LLDP, IGMP v1, v2   |
| <b>Network Tools</b>                                    | Wired and wireless remote packet capture, logging, WAN speed test, ZapD, remote network connectivity tools  |
| <b>Tunnel</b>   | L2TPv2, L2GRE, PPPoE  |
| <b>IP</b>   | IPv4, IPv6  |
| <b>VLAN</b>   | 802.11Q, max 4096   |
| <b>Management interfaces</b>                            | HTTP/HTTPS web interface, SSH, Telnet   |
| <b>Security</b>   | Rogue AP detection and termination (X), WIDs/WIPs, DoS protection<br><br>L2–L7 firewall with application visibility (X) & control (X), DNS-based access control (X)<br>ACL and AirCleaner tools   |
| <b>Services</b>   | Wi-Fi Calling control, NTP, Syslog, DNS proxy, SNMP traps, SNMPv1, SNMPv2c, SNMPv3, TCP and DNS logging   |

\*X features available in cnMaestro X.

## XE3-4 Wi-Fi 6/6E Indoor Access Point

### Management



**cnMaestro** uses a distributed intelligence architecture with cloud-first management and edge-intelligent APs that self-optimize for the RF environment. cnMaestro delivers a single pane-of-glass management for Cambium broadband fixed wireless, cnMatrix Ethernet Switches, enterprise-grade Wi-Fi APs, NSE Security Appliance/Firewall/SDWAN, and service provider routers.

cnMaestro can be deployed on cloud or on-premises via a virtual machine.

To serve a growing market for advanced management and services functionality, Cambium Networks offers cnMaestro in two management tiers:

#### cnMaestro X

Paid subscription that includes:

- Advanced device management capabilities
- Deep packet inspection (DPI) application visibility and control for 2,400+ apps
- RESTful management and statistics API
- Presence location push APIs
- Graphic reports
- Webhooks
- Cambium Care Pro for 24x7 technical support
- Accelerated access to L2 engineers and regular software updates

#### Assists

- Assesses the network's configuration and identifies weak security settings and proposes a fix to ensure the network configuration is up to the top security industry standards

#### cnMaestro Essentials

License-free cloud management that delivers a disruptive total cost of ownership (TCO) for organizations of all sizes. Includes EasyPass for OneClick or voucher-based connection as well as WiFi4EU access.

#### X Assurance

- Helps to quickly identify network-wide connectivity issues by isolating every element of the client's lifecycle, either radio or network related
- Gives an overview quality index of the network and highlights each element's contribution to easily identify the worst offender
- Provides insight of probable causes and proposes fixes for the administrator to apply
- Provides individual client connectivity visibility throughout the entire lifecycle of its connection to easily identify each connection's result and highlight the failure reason, should there be any

#### EasyPass Portal with Additional Options

- Self-registration: Form-based access
- Sponsored guest: Guest ambassador-based access
- Paid access: Monetize the Wi-Fi access
- Microsoft Azure: Corporate user login
- Google login: Web login using Google accounts

**Find out more about  
cnMaestro**

### XE3-4 Wi-Fi 6/6E Indoor Access Point



Front



Back



Left Side



Right Side

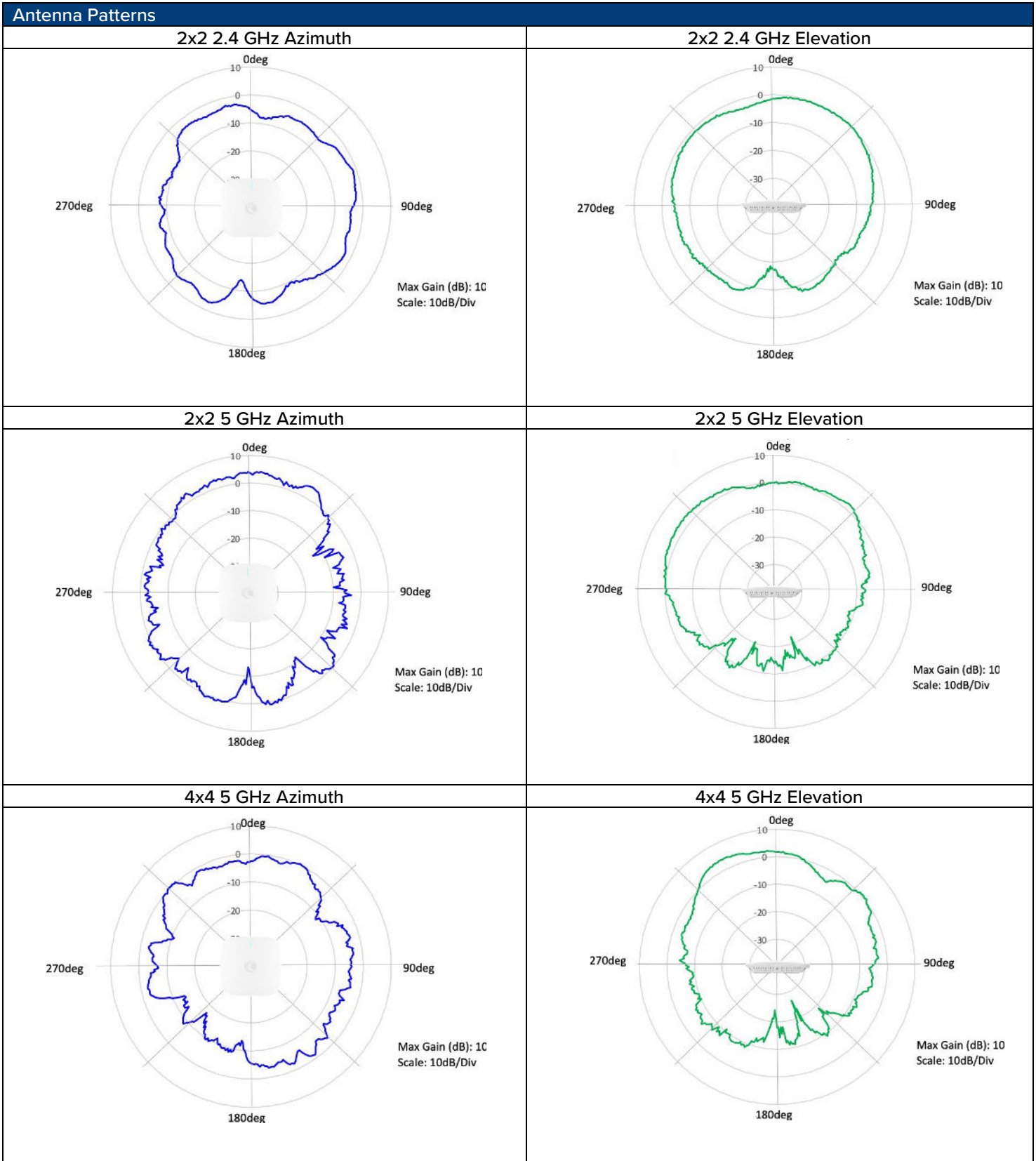


Back

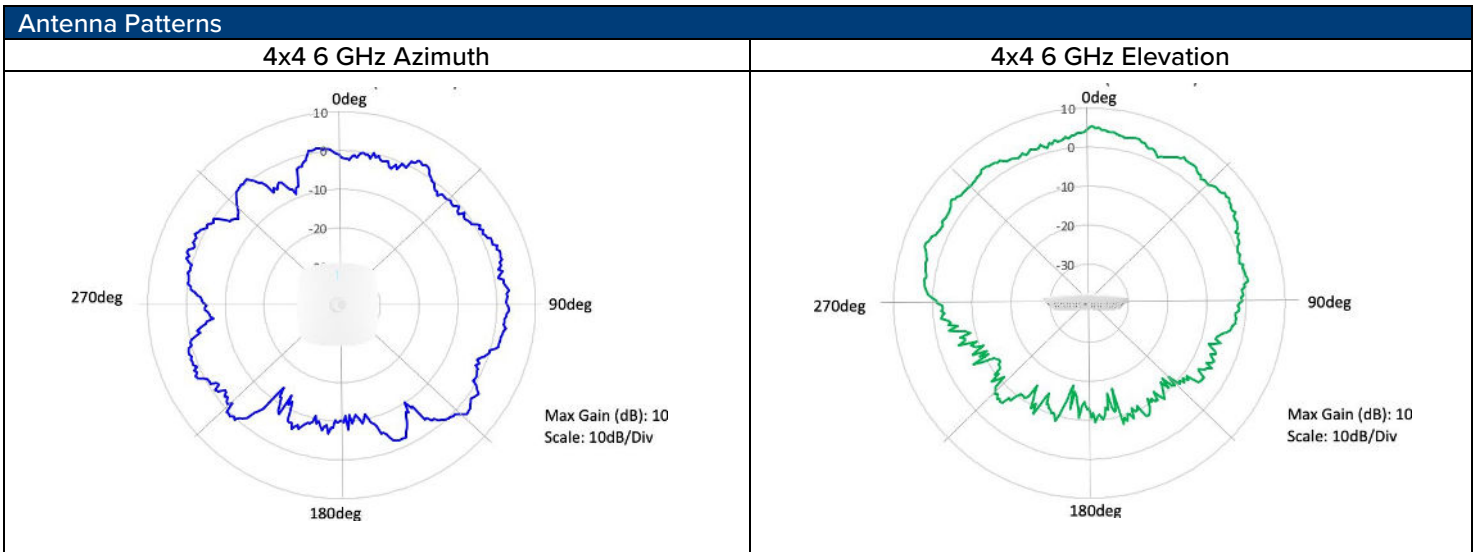


Back

### XE3-4 Wi-Fi 6/6E Indoor Access Point



## XE3-4 Wi-Fi 6/6E Indoor Access Point



### XE3-4 Ordering Information

|                         |   |
|-------------------------|---|
| <b>Regulatory Model</b> | XE3-4   |
| <b>XE3-4X00B00-US</b>   | Indoor Tri-Radio Wi-Fi 6/6E Access Point. SDR 802.11ax 4x4/2x2, US                                      |
| <b>XE3-4X00B00-EU</b>   | Indoor Tri-Radio Wi-Fi 6/6E Access Point. SDR 802.11ax 4x4/2x2, EU                                      |
| <b>XE3-4X00B00-RW*</b>  | Indoor Tri-Radio Wi-Fi 6/6E Access Point. SDR 802.11ax 4x4/2x2, RW                                      |
| <b>XE3-4X00B00-CA</b>   | Indoor Tri-Radio Wi-Fi 6/6E Access Point. SDR 802.11ax 4x4/2x2, CA                                      |
| <b>C000000L141A</b>     | PoE, 60W, 56V, 10GbE DC Injector, Indoor, Energy Level 6 Supply, accepts C5 connector                   |
| <b>N000000L034B</b>     | PoE injector, 30.5W, 56V, 5GbE DC Injector, Indoor, Energy Level 6 Supply, accepts C5 connector         |
| <b>AX-E510RBKT-WW</b>   | Shock mount bracket for cnPilot e510 and e505, Wi-Fi 6 XV3-8, XV2-2. XE3-4                              |
| <b>AX-WALLBRKT-WW</b>   | Wall Mount L-Bracket for XV and XE series APs. Use to mount the AP horizontally.                        |
| <b>AX-X7-1BRKT-WW</b>   | Spare Mounting Bracket for X7 series enterprise access point. Compatible with X7-3 series, XE3-4, XV3-8 |

### cnMaestro X Subscriptions

|                        |   |
|------------------------|---|
| <b>MSX-SUB-XE3-4-1</b> | cnMaestro X for one XE3-4 AP. Creates one Device Tier3 slot. Includes Cambium Care Pro support. 1-year subscription |
| <b>MSX-SUB-XE3-4-3</b> | cnMaestro X for one XE3-4 AP. Creates one Device Tier3 slot. Includes Cambium Care Pro support. 3-year subscription |
| <b>MSX-SUB-XE3-4-5</b> | cnMaestro X for one XE3-4 AP. Creates one Device Tier3 slot. Includes Cambium Care Pro support. 5-year subscription |

\*AP SKU that ends with 00-RW” does not support 6GHz. The SDR radio is locked to 5GHz mode and cannot be changed to 6GHz. Contact Cambium Networks customer support if you are operating a 00-RW product within a country that has allowed 6GHz operation.

## XE3-4 Wi-Fi 6/6E Indoor Access Point

### Cambium Care Support

|                          |  |
|--------------------------|--|
| <b>CCADV-SUP-XE3-4-1</b> | Cambium Care Advanced, 1-year support for one XE3-4 Wi-Fi 6/6E AP. 24x7 TAC support, SW updates, and NBD advance replacement for HW          |
| <b>CCADV-SUP-XE3-4-3</b> | Cambium Care Advanced, 3-year support for one XE3-4 Wi-Fi 6/6E AP. 24x7 TAC support, SW updates, and NBD advance replacement for HW          |
| <b>CCADV-SUP-XE3-4-5</b> | Cambium Care Advanced, 5-year support for one XE3-4 Wi-Fi 6/6E AP. 24x7 TAC support, SW updates, and NBD advance replacement for HW          |
| <b>CCPRO-SUP-XE3-4-1</b> | Cambium Care Pro, 1-year support for one XE3-4 Wi-Fi 6/6E AP. 24x7 TAC support and SW updates  |
| <b>CCPRO-SUP-XE3-4-3</b> | Cambium Care Pro, 3-year support for one XE3-4 Wi-Fi 6/6E AP. 24x7 TAC support and SW updates  |
| <b>CCPRO-SUP-XE3-4-5</b> | Cambium Care Pro, 5-year support for one XE3-4 Wi-Fi 6/6E AP. 24x7 TAC support and SW updates  |
| <b>CCADV-UPG-XE3-4-1</b> | Cambium Care Advanced Add-on to cnMaestro X, 1-year support for one XE3-4. 24x7 TAC support, SW updates, and NBDS advance replacement for HW |
| <b>CCADV-UPG-XE3-4-3</b> | Cambium Care Advanced Add-on to cnMaestro X, 3-year support for one XE3-4. 24x7 TAC support, SW updates, and NBDS advance replacement for HW |
| <b>CCADV-UPG-XE3-4-5</b> | Cambium Care Advanced Add-on to cnMaestro X, 5-year support for one XE3-4. 24x7 TAC support, SW updates, and NBDS advance replacement for HW |

### LIMITED WARRANTY

Cambium Networks XE3-4 Wi-Fi 6/6E Access Point includes a limited lifetime hardware warranty that extends 5 years after end of sale.

### ABOUT CAMBIUM NETWORKS

Cambium Networks enables service providers, enterprises, industrial organizations, and governments to deliver exceptional digital experiences and device connectivity with compelling economics. Our ONE Network platform simplifies management of Cambium Networks' wired and wireless broadband and network edge technologies. Our customers can focus more resources on managing their business rather than the network. We make connectivity that just works.

[cambiumnetworks.com](http://cambiumnetworks.com)